



UNIVERSITY OF  
BIRMINGHAM

FMLM/HEE: *Tomorrow's leaders, today*

28 June 2017

# Developing future medical leaders? The contribution of inter-calation in health management and leadership

**Professor Mark Exworthy**

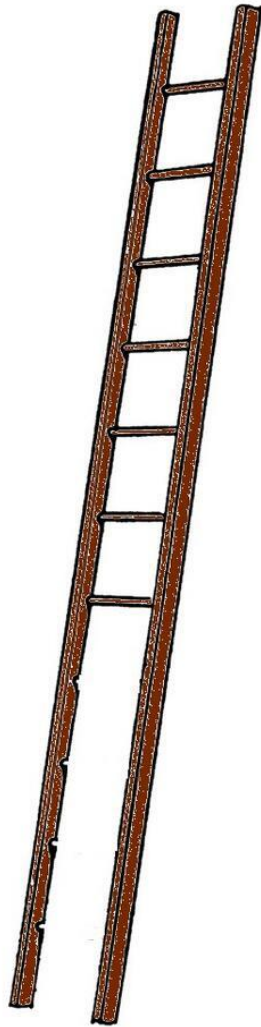
Health Services Management Centre, University of Birmingham

Email: [M.Exworthy@bham.ac.uk](mailto:M.Exworthy@bham.ac.uk)



# Medical leadership

A missing rung in the  
medical education 'ladder'?





[Home](#) > [Undergraduate](#) > [Undergraduate courses](#) > [Healthcare Management and Leadership - Intercalated Degree](#)

# Health Management and Leadership - Intercalated Degree

## Course fact file

### Course Type

Undergraduate, Intercalated

### Duration

1 year Full Time

### Start date

September / October annually depending on published term dates.

### Study options

Undergraduate 1 year

## Contact details

### Admissions Tutor

Derek Kyte

### Email

[poshgeneraladmin@contacts.bham.ac.uk](mailto:poshgeneraladmin@contacts.bham.ac.uk)

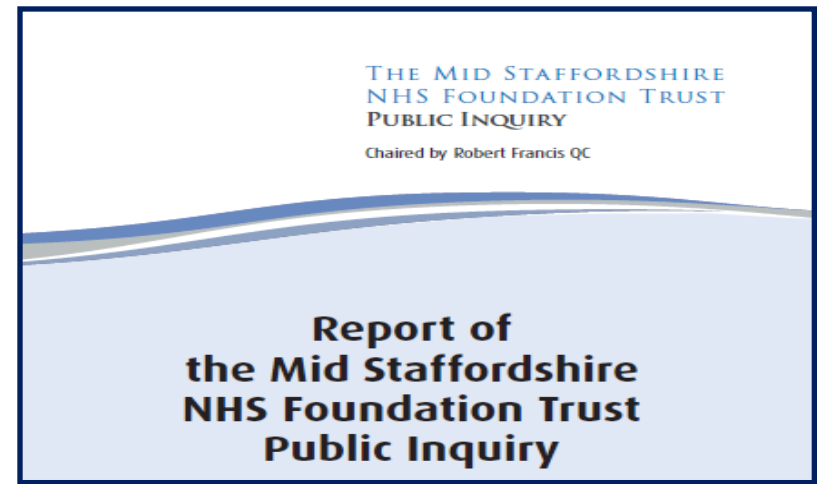
### Programme Lead:

Professor Mark Exworthy, Health Services Management Centre

### Email

[M.Exworthy@bham.ac.uk](mailto:M.Exworthy@bham.ac.uk)





Curriculum developments

External events



Student interest

Research & teaching expertise



@UoBMedLeaders

HSMC

**Health  
services  
management**

**Leadership &  
change  
management**

**Improving  
quality &  
patient safety**

**HEALTH  
MANAGEMENT and LEADERSHIP  
(BMedSci)**

**Research  
methods**

**Research  
project design**

**Research  
project**



# Opportunities and challenges

- ❑ Growing interest among students
- ❑ Direct relevance to current issues
- ❑ Chance to work on QI projects
- ❑ Future medical leaders?

- ? How to stimulate prior interest?
- ? What is the level of & content of learning?
- ? How can learning adapt to current (NHS) challenges?





UNIVERSITY OF  
BIRMINGHAM

FMLM/HEE: *Tomorrow's leaders, today*

28 June 2017

# Developing future medical leaders? The contribution of inter-calation in health management and leadership

**Professor Mark Exworthy**

Health Services Management Centre, University of Birmingham

Email: [M.Exworthy@bham.ac.uk](mailto:M.Exworthy@bham.ac.uk)

