

# The National Medical Director's Clinical Fellow Scheme

## Who we are



**Professor Sir Bruce Keogh**  
National Medical Director of NHS England and the sponsor of this scheme

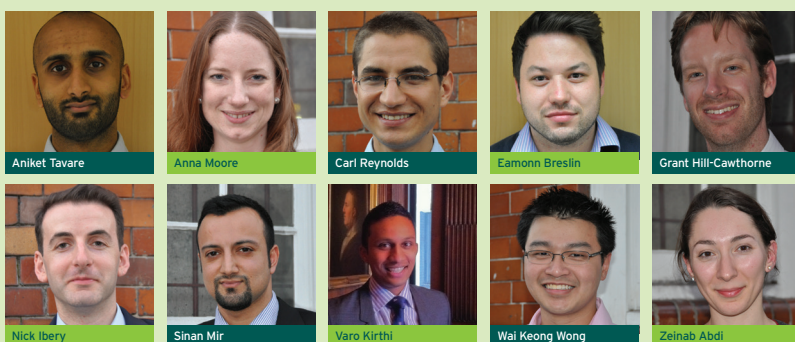


**Peter Lees**  
Medical Director of the Faculty of Medical Leadership and Management, the organisation that manages the National Medical Director's Clinical Fellow Scheme

### Host organisations

- NHS England
- FMLM
- Bupa
- Health Education England (HEE)
- Royal College of Physicians (RCP)
- Royal College of Obstetrics and Gynaecology (RCOG)
- Academy of Medical Royal Colleges (AoMRC)
- Association of British Healthcare Industries (ABHI)
- Public Health England (PHE)
- CQC
- BMJ
- GMC
- NICE
- St Andrew's Healthcare
- Royal College of Psychiatrists (RCPsych)
- Health and Social Care Information Centre (HSCIC)
- Trust Development Authority (TDA)

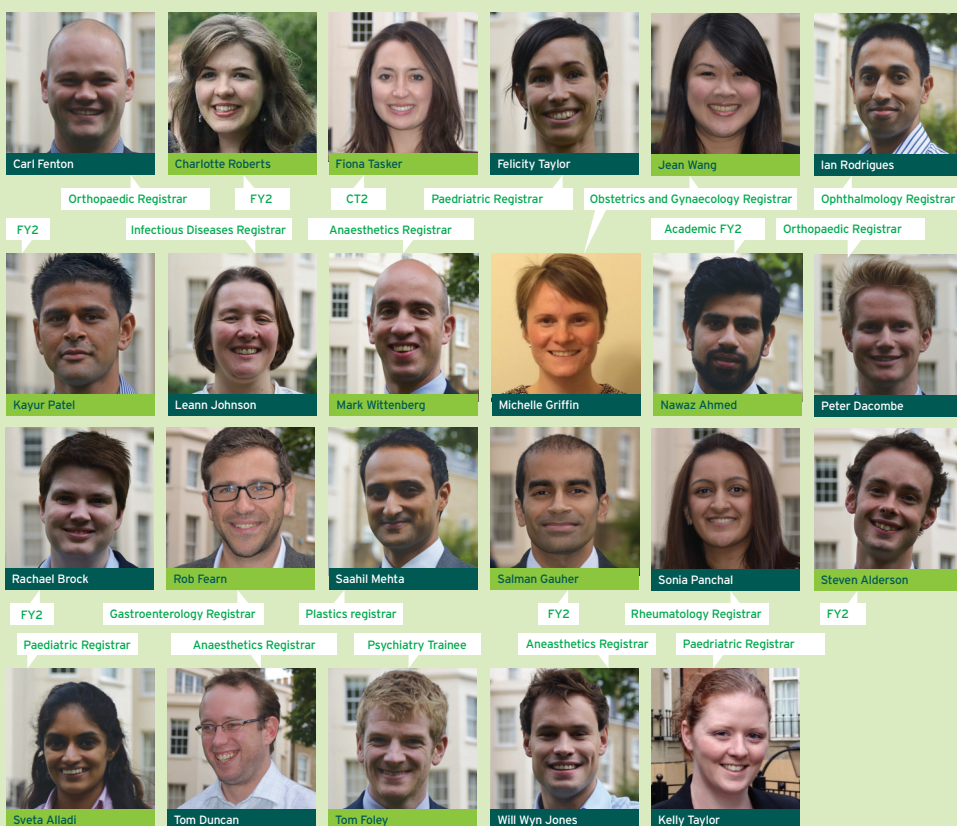
### 2011



### 2012



### 2013



Faculty of  
**Medical Leadership  
and Management**

