

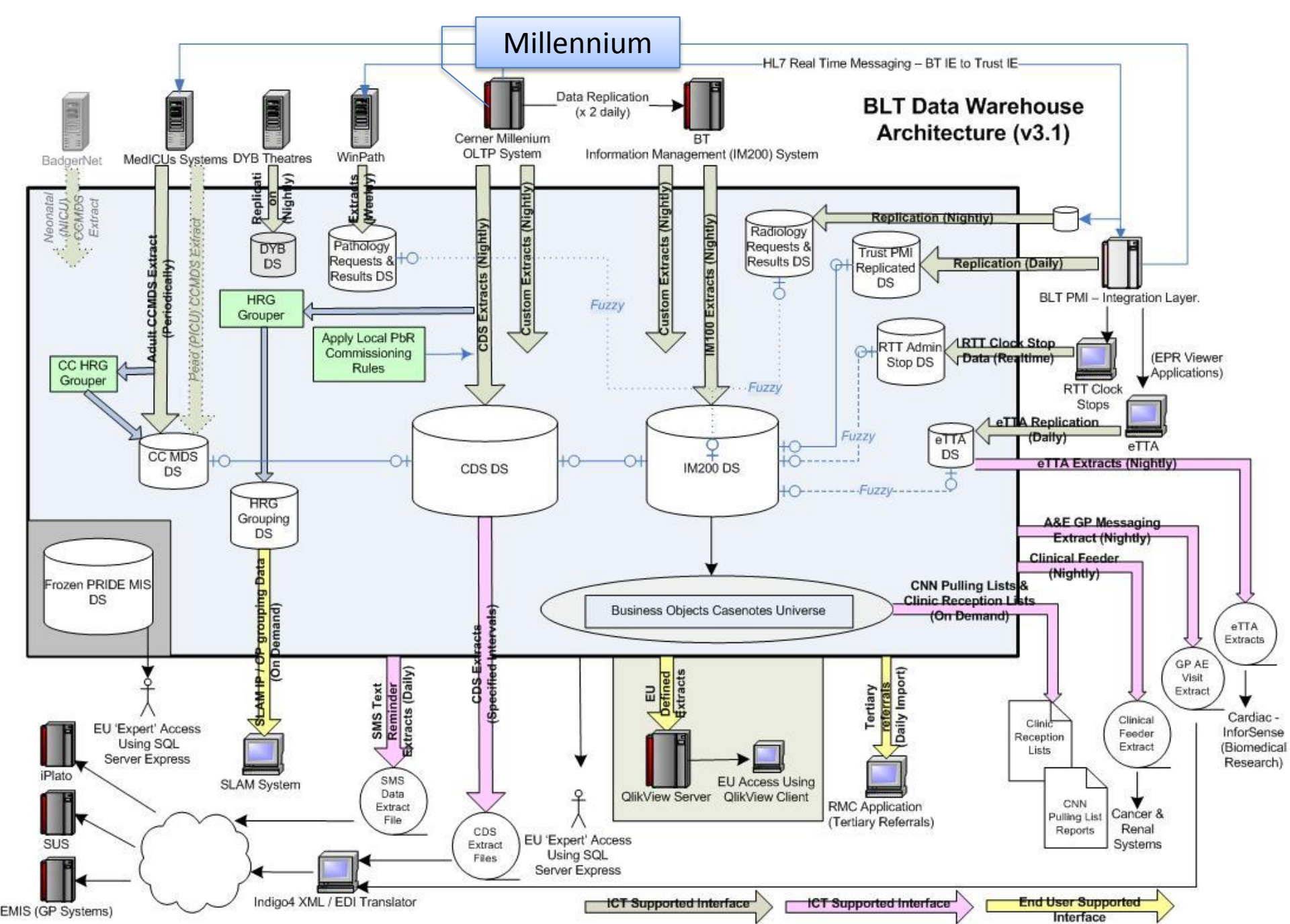
Patients and families

Patients in mind

Patients in your heart



Implementing the Information Strategy: The must do's



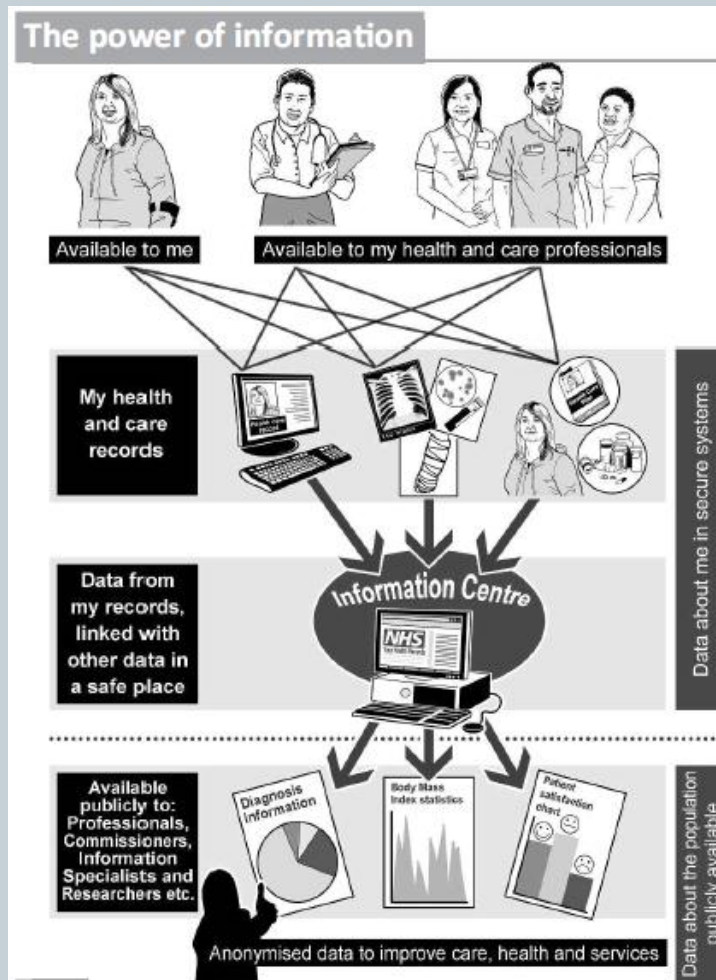
England



The power of information:

Putting all of us in control of the health
and care information we need

Information strategy - England



Summary must do's



- Patient control of their medical record
- Scaled use of data
- Interoperability and use of standards
- Education and knowledge

Health information Exchange



You are here : [Healthcare Gateway](#)

Healthcare Gateway Limited

Healthcare Gateway Limited is a 50:50 joint venture business from EMIS and INPS.

The aim of Healthcare Gateway is to implement a Medical Interoperability Gateway (MIG) that will facilitate the sharing of data between healthcare professionals.

[EMIS](#) and [INPS](#) software users in the UK represent around 75 per cent of GP practices and together hold approximately 46 million electronic patient health records.

The formation of Healthcare Gateway allows real time interoperability with GP systems and other healthcare professionals within the NHS. This has the potential to significantly increase efficiency in the NHS in addition to improving patient care.



The development of the MIG has been driven by demand from the NHS and other healthcare providers to move to a "connect all" ethos. The need for wider access to a critical mass of birth-to-grave patient records is increasingly important given the drive to deliver more NHS services in the community.

Patient viewing



Providing up-to-date medical information for patients and healthcare professionals

Renal PatientView **NHS**

[Home](#) [Patient Details](#) [Patient Info](#) [About Me](#) [Enter My...](#) [Results](#) [Medicines](#) [Letters](#) [Contact](#) [Forum](#) [Help](#)

logged in as: **testhd** [log out](#)

15 Oct 2012



[Got Alport's?](#)

[RPV news update](#)

[Problems?](#)

Patient Details

Patient Details for RPVHD TEST, uploaded by unit: Glasgow Royal

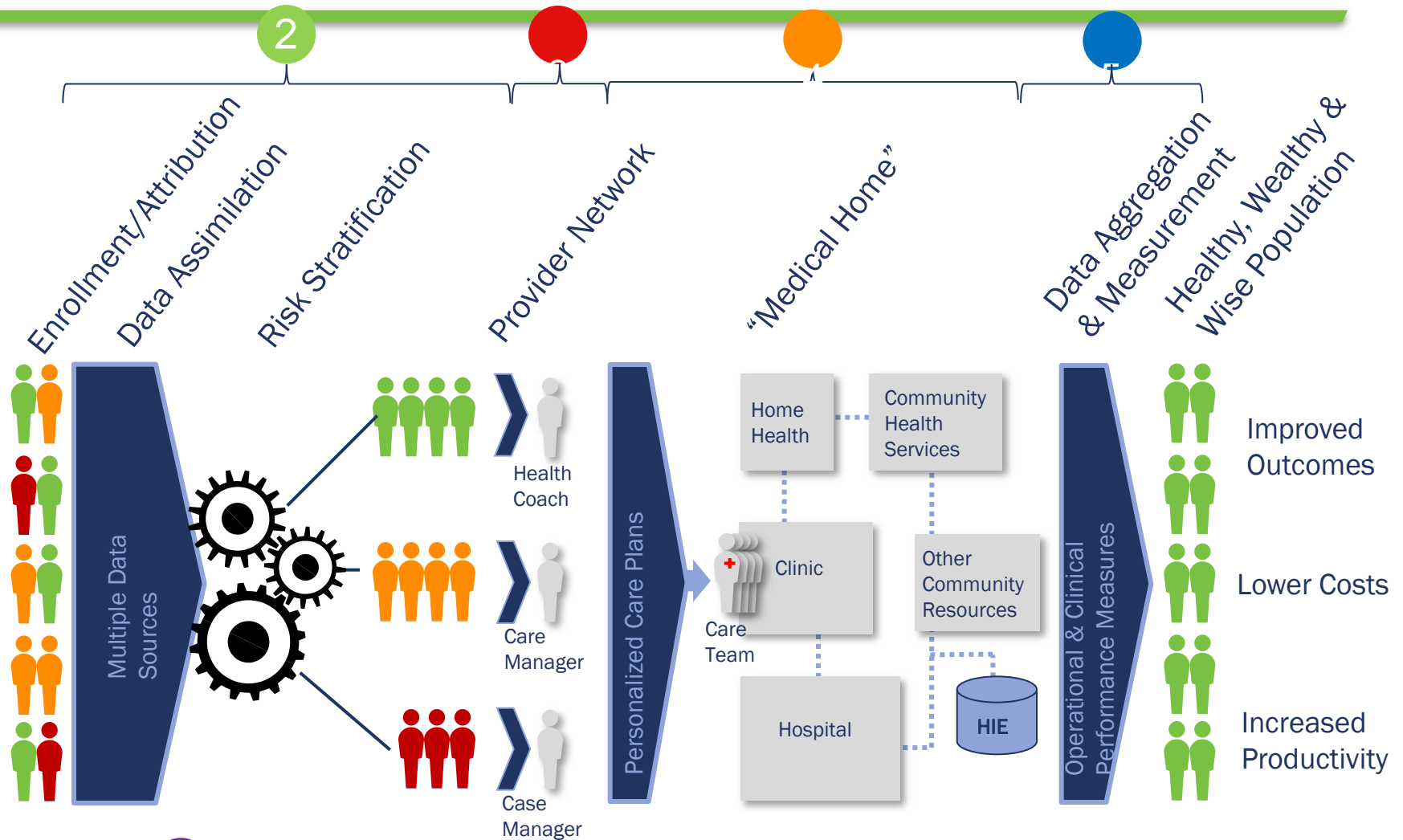
Last Name	TEST
First Name	RPVHD
Date of Birth (yyyy-mm-dd)	1956-01-01
NHS Number	201011956Z
Hospital Number	0012345M
Address	1a The Renal Unit Nephron Square Glasgow
Postcode	G4 0SF
Telephone 1	NO PHONE
Diagnosis	IgA nephropathy
Treatment	General nephrology (not dialysis, not transplant)
Transplant Status	No status uploaded (Explain this)
Other Conditions	12 IgA nephropathy (proven by IMF not code 85)

Scaling for population health



- Innovation for data collection
- Use of problems lists and terminology
- Goal setting for patients
- New forms of practice

Population Health Framework...




Health plan and payment system aligns incentives for beneficiaries and providers


Health Plan / TPA



England Commissioning Datasets




The Information Centre
for health and social care



[Edit search options](#) | [Browse by subject](#) | [Help](#)

[About us](#) | [Statistics & data collections](#) | [Services](#) | [News & events](#) | [Work with us](#) | [My IC](#)

▼ **Datasets**

- Approach
- [Dataset List](#)
- Cancer
- [CDS](#)
 - Guidance for completing CDS records
- Heart Disease
- Diabetes
- Mental Health
- National Workforce Dataset (NWD)
- NHS Health Checks
- Older People
- Renal
- National Specialty List/Treatment Function Codes
- Current consultations

[Home](#) | [Services](#) | [Datasets](#) | [Dataset List](#)

Commissioning Datasets (CDS)

Status

The Commissioning Datasets are maintained and developed by the NHS Information Centre, in accordance with the needs of the NHS and the Department of Health.





Background

CDS form the basis of data on activity carried out by NHS Trusts reported centrally for monitoring and payment purposes. They support the current Healthcare Resource Group (HRG) version 4 for calculation of payment to trusts and monitoring of other initiatives including the 18 weeks Referral to Treatment standard. Current developments to the CDS include:

- development of data items to support 18 weeks Referral to Treatment, such as
 - monitoring the closure of patient pathways
 - updates to the Elective Admission Lists
 - piloting the Future Care Outpatients data items
- maintenance of treatment function codes and specialty lists to support

Task list

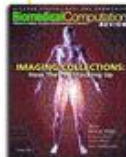
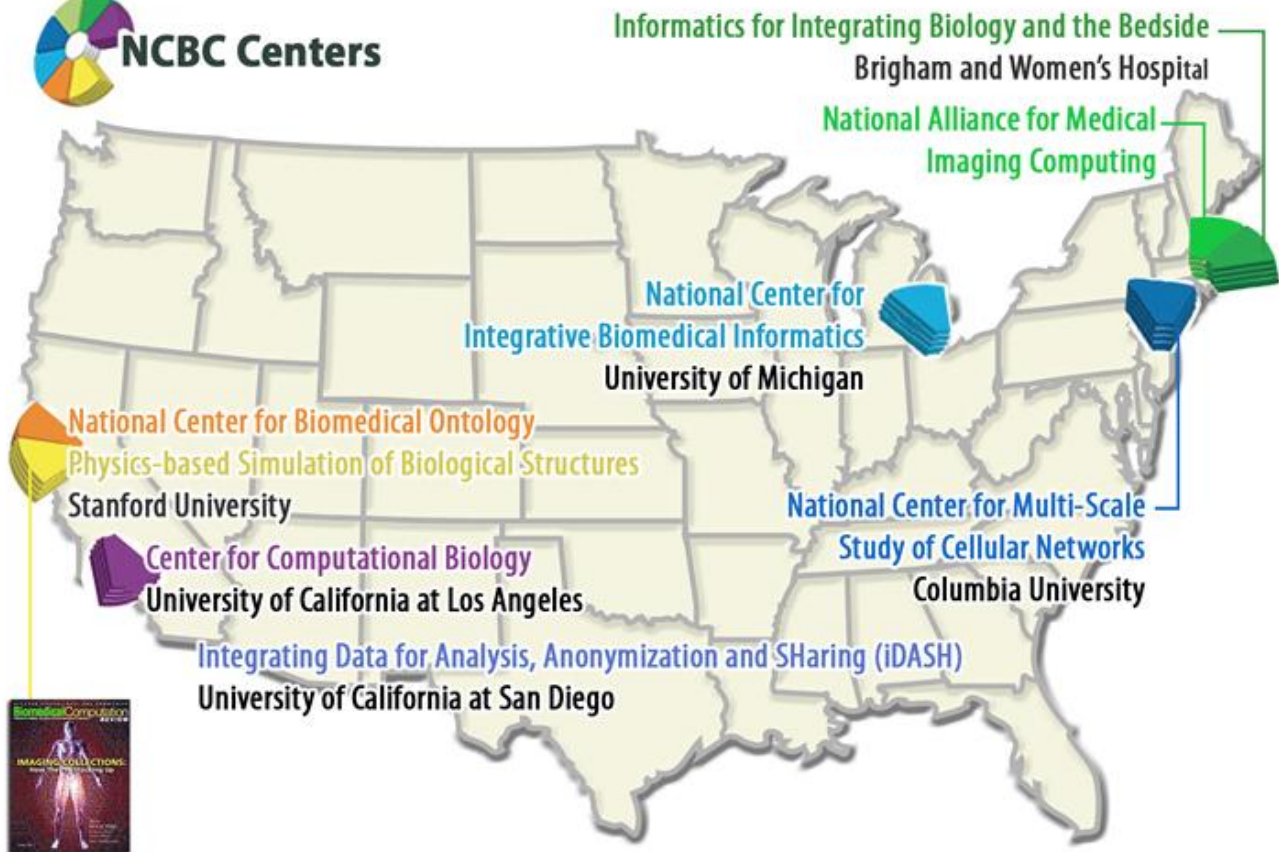
- ▶ [Take part in our consultation on the Commissioning Data Set \(CDS\) Elective Admission Lists and Future Outpatients](#)

-  [Subscribe to e-bulletins](#)
-  [Subscribe to an RSS feed](#)
-  [Jargon buster](#)
-  [A-Z of statistics](#)

National Centers for Biomedical Computing

- Home
- NCBC Summary
- Calendar
- All Hands Meetings
- Biological Projects
- Biositemaps Projects
- Working Group Archive

[Search for NCBC resources in the new Resource Discovery System \(RDS\)](#)



Getting to grips with data



izb2 Query & Analysis Tool Find Patients | Analysis Tools | Message Log | Help | Logout

Navigate Terms Find Terms

- Alternative Medicines
- Anti-Infectives
- Antineoplastics
- Biologicals
- Cardiovascular Agents
- Central Nervous System Agents
- Coagulation Modifiers
- Gastrointestinal Agents
- Genitourinary Tract Agents
- Hormones/Hormone Modifiers
 - 5-Alpha-Reductase Inhibitors
 - Adrenal Cortical Steroids
 - Adrenal Corticosteroid Inhibitors
 - Antiandrogens
 - Antidiuretic Hormones
 - Antigonadotropic Agents
 - Antithyroid Agents

Workplace

Demo

Query Tool

Query Name: _____

Group 1			Group 2			Group 3		
Dates	Occurs > 0x	Exclude	Dates	Occurs > 0x	Exclude	Dates	Occurs > 0x	Exclude
Chronic bronchitis (491)			Adrenal Cortical Steroids					

one or more of these **AND** one or more of these **AND** drop a term on here

Run Query New Query 2 Groups New Group

Previous Queries

- Chronic-Adrenal@18:35:17 [10-15-2012] [Demo]
- Diabetes mellit@09:33:46 [10-15-2012] [Demo]
- Diabetes mellit@09:33:46 [10-15-2012] [Demo]
- Diabetes mellit@09:33:46 [10-15-2012] [Demo]
- Diabetes mellit@09:33:46 [10-15-2012] [Demo]
- Diabetes mellit@09:33:46 [10-15-2012] [Demo]

Query Status

Finished Query: "Chronic-Adrenal@18:35:17"
Patient Count - 267 patients **FINISHED** [18.6 secs]

Information, datasets and tools



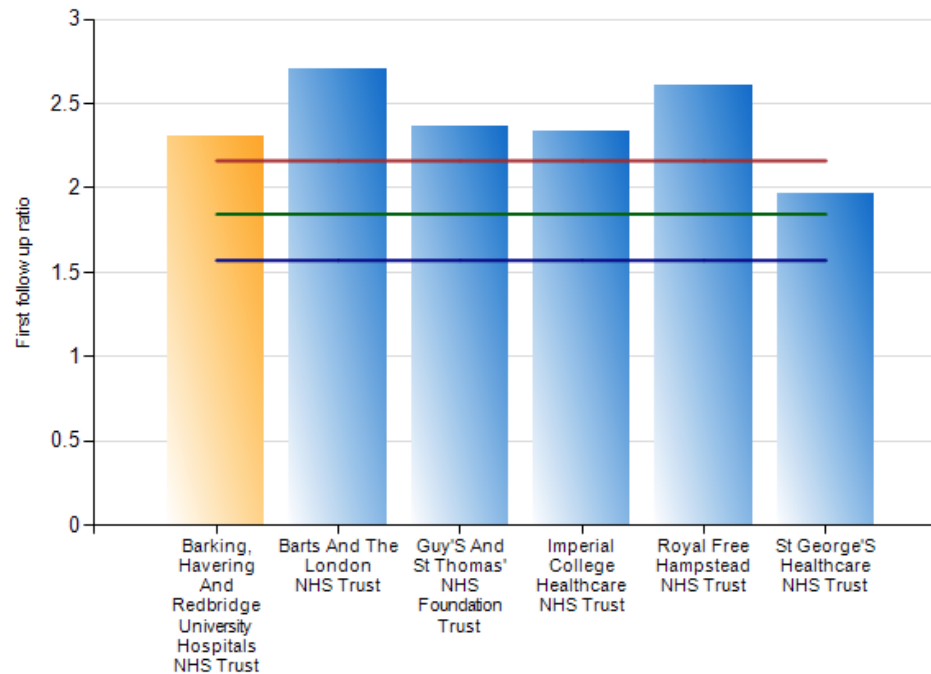
Using the data



Summary

First follow up ratio	2.31
Opportunity	£2.60M
No. of follow up appointments	36,104
Rank	100

Managing First Follow Up



Citizen involvement



- Open access to data
 - Public health observatories
 - Data.gov.uk
- Patient facing websites
- NHS Choices

Advice on-line



GP practices near EC2Y 8BT

You can usually choose to register with any GP in your area - use the results below to compare GPs. And you can book an appointment or walk in and wait to be seen at one of the new **GP Health Centres**

Read more about [how to register with a GP](#).

We found **434 GP practices** within of Only show practices accepting new patients

Clinics

- Baby clinic
- Family planning clinics
- Asthma clinics
- Diabetes clinics
- Minor surgery

Must have:

- On-site car parking
- Disabled parking
- Step-free access

Extended opening

- Appointments before 8am
- Appointments after 6.30pm
- Weekend appointments

Update results >
or [start a new search](#)

closest shown first ▾

[Simple list](#) | [Detailed comparison](#) | [Map](#)

Previous [1](#) [2](#) [3](#) [4](#) [5](#) [Next](#)

The Neaman Practice

15 Half Moon Court London
EC1A7HF
0207 600-9740
0.06 miles away |

Add to shortlist

City Road Medical Centre

City Approach 190-196 City
Road London EC1V2QH
020 3316 8570
0.67 miles away |

Add to shortlist

Dr Segarajasinghe

The Pine Street Medical
Centre 17 Pine Street
London EC1R0JH
020 7713 5256
0.67 miles away |

Add to shortlist

Clerkenwell Medical Practice

Pine Street Finsbury Health
Centre London EC1R0LP
020 7833 5906
0.67 miles away |

Add to shortlist

Gray's Inn Medical Practice

77 Grays Inn Road London
WC1X8TT
020 7405 9360
0.79 miles away |

Add to shortlist

Feedback



The screenshot shows the Patient Opinion website. At the top left is the logo, which consists of two overlapping speech bubbles, followed by the text "Patient Opinion" and the tagline "Every voice matters". To the right of the logo, it says "An independent site about your experience" and "We pass on your feedback". Below this is a navigation bar with buttons for "Home", "Tell your story", and "About us". On the right side of the navigation bar is a search bar with a magnifying glass icon and the text "Search" and "eg Leeds General Infirmary".

The main content area features a large quote in a speech bubble: "I almost enjoyed my colonoscopy, thanks to the...". Below the quote, it says "About: The Royal London Hospital". Further down, it says "Posted by Anonymous 2 weeks ago". Below that is the text "What I liked" and a partial paragraph: "I attended the Royal London for a colonoscopy on Easter Saturday. From the fabulous service when I received the phone call to schedule my appointment to the

Comparing cleanliness ratings with infection rates



NHS Choices Measure	Other variable	Spearman Rho	p value
Patient perception of cleanliness	Rate of MRSA bacteraemia (per 1,000 bed days)	-0.30	<0.001
Patient perception of cleanliness	Rate of C. difficile infection (per 1,000 bed days)	-0.16	0.04

Greaves et al, 2012 Arch Int Med

Enabling patient knowledge



Explicit strategies for empowerment

- Digital data for patients
- Clinical goal setting
- Data exchange
- Listening

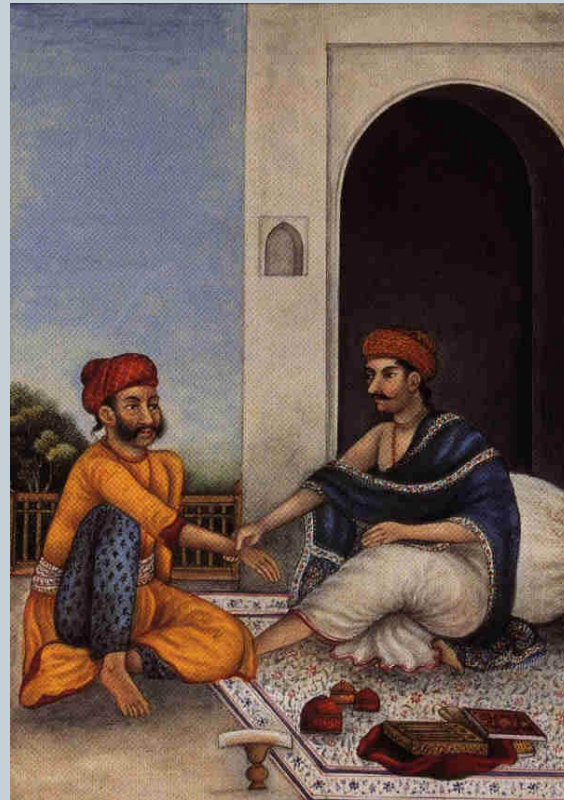
Enabling professional knowledge



Explicit strategies for empowerment

- Digital data for professionals
- Clinical coaching
- Innovation and research
- Training and knowledge

Quality Improvement



Goal- Health through data synthesis